

## operator's manual

SUPPLEMENT FOR MODEL: 3346

REFERENCE: CONTRACT DAA E07-86-C-2359

This correction sheet must be used in  
conjunction with the 1987 Alpine  
operator's manual (P/N 414 6065 00)

# Alpine<sup>®</sup> 503

## 1987

414 6280 00

---

## SERVICE PROCEDURE PRIOR TO OPERATION

---

MODEL: 1987 ALPINE (Military version)  
VEHICLE CODIFICATION: 3346 - 3347

### BATTERY

1. Remove battery from vehicle.
2. Remove the sealing tube from battery vent elbow.

◆ **WARNING: Failure to remove the sealing tube could result in an explosion.**

3. Remove caps and fill battery to the UPPER LEVEL line with electrolyte (specific gravity: 1.260 @ 20°C (68°F)).
4. Allow battery to stand for 30 minutes MINIMUM so that electrolyte can soak through battery cells.
5. Readjust electrolyte to the UPPER LEVEL line.
6. Charge battery at a rate not exceeding 2.0 amperes for 10 to 20 hours checking state of charge frequently.

▼ **CAUTION: If charging rate exceeds 2.4 amps. reduce immediately.**

▼ **CAUTION: If cell temperature rises above 50°C (122°F) discontinue charging temporarily and/or reduce the charging rate.**

◆ **WARNING: Gases given off by a battery being charged are highly explosive. Always charge in a well ventilated area. Keep battery away from cigarettes or open flames.**

◆ **WARNING: Always turn battery charger off prior to disconnecting cables. Otherwise a spark will occur and battery might explode.**

7. After charging, allow gas bubbles to escape by lightly shaking battery by hand. Let it settle about 1 hour.
8. Readjust electrolyte to the UPPER LEVEL line (if required).

9. Reinstall battery caps and wipe off any spillage using a solution of baking soda and water.

▼ **CAUTION: Do not allow baking soda and water solution to enter battery cells and contaminate electrolyte.**

10. Connect one end of vent tube to the battery vent elbow and route other end through hole in bottom pan.

◆ **WARNING: Vent tube must be free and open. A kinked or bent tube will restrict ventilation and create gas accumulation that could result in an explosion.**

11. Secure battery to rack and connect terminals.

▼ **CAUTION: Battery negative (-) terminal must always be disconnected first and reconnected last.**

#### WINDSHIELD

Carefully peel off protective film from windshield.

Position windshield on cab, over locating slots. Push down until tabs are fully inserted in slots and lock, from inside cab, using special o-rings (9) supplied.

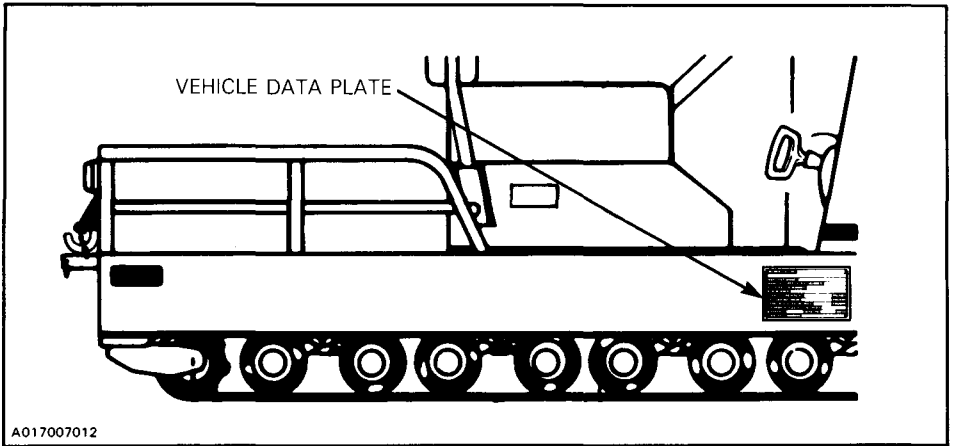
#### DRIVE BELT

Since the vehicle is coated with a rustproof solution the drive belt is not installed.

Before installing drive belt clean pulleys and brake disc with ethyl alcohol.

▼ **CAUTION: Check pulley and track alignment as described in sections 03-05 and 05-08 of 1986 BOMBARDIER shop manual before putting vehicle in service.**

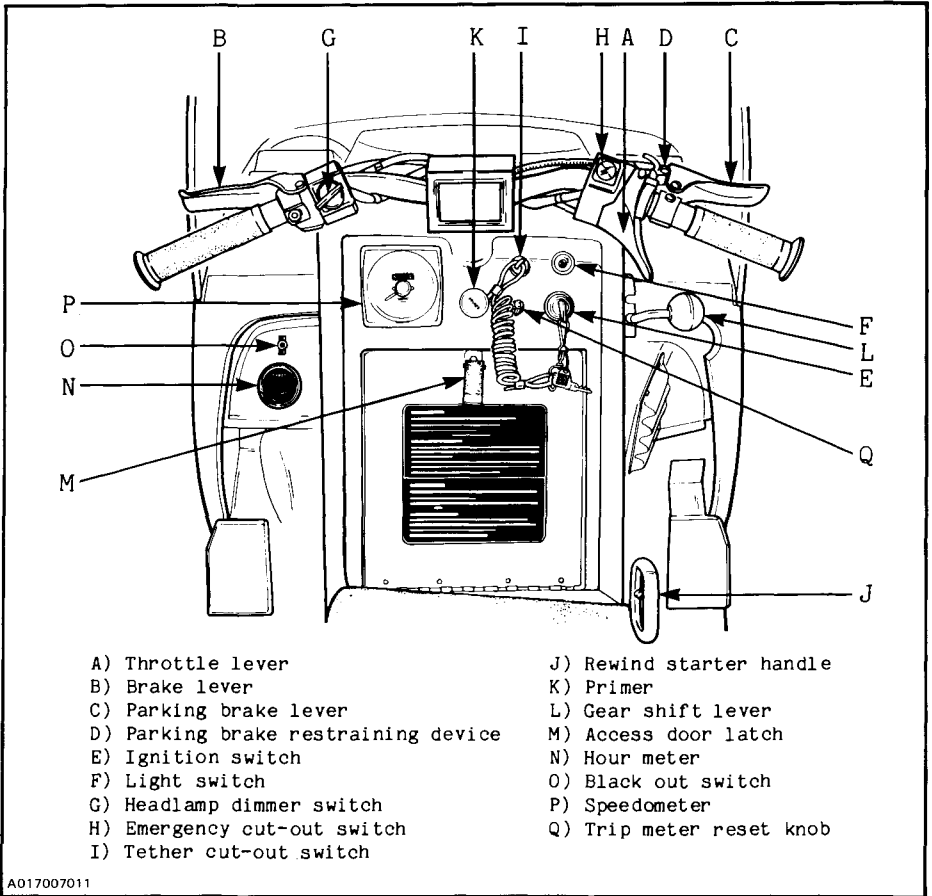
Install spare drive belt to drive belt holder on driven pulley support.



A017007012

The vehicle data plate appears on the right hand side of the chassis, as shown.

# CONTROLS/ INSTRUMENTS



## N) Hour meter

The hour meter indicates the total number of engine running hours.

## O) Black out switch

Turns off the stoplamp circuit when "off".

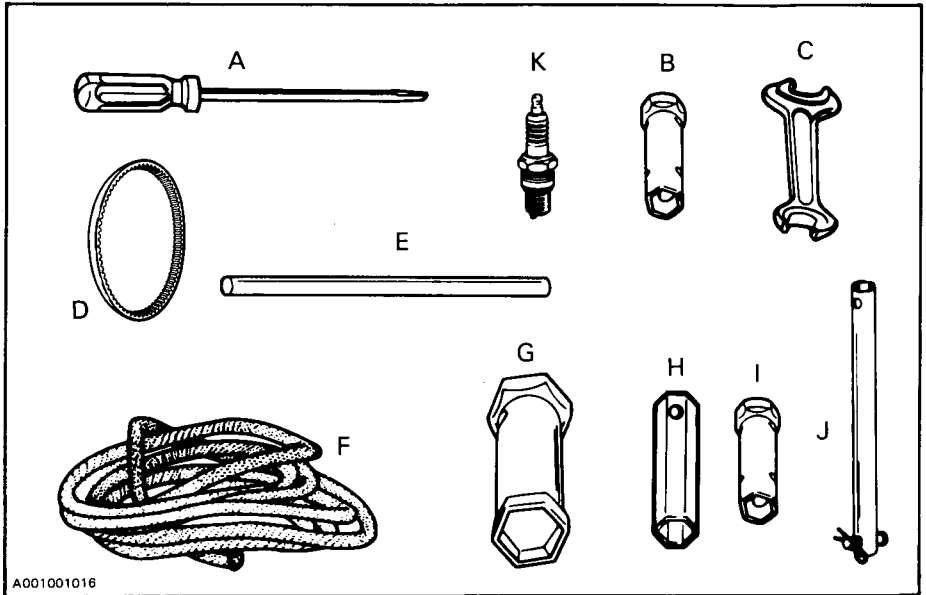
◆ **WARNING:** The engines and the corresponding components identified in the operator's manual should not be utilized on product(s) other than that mentioned on the cover page of the operator's manual.

# TOOLS

---

As standard equipment, each new snowmobile is supplied with a basic tool kit such as screwdriver, wrenches, emergency starter rope, etc.

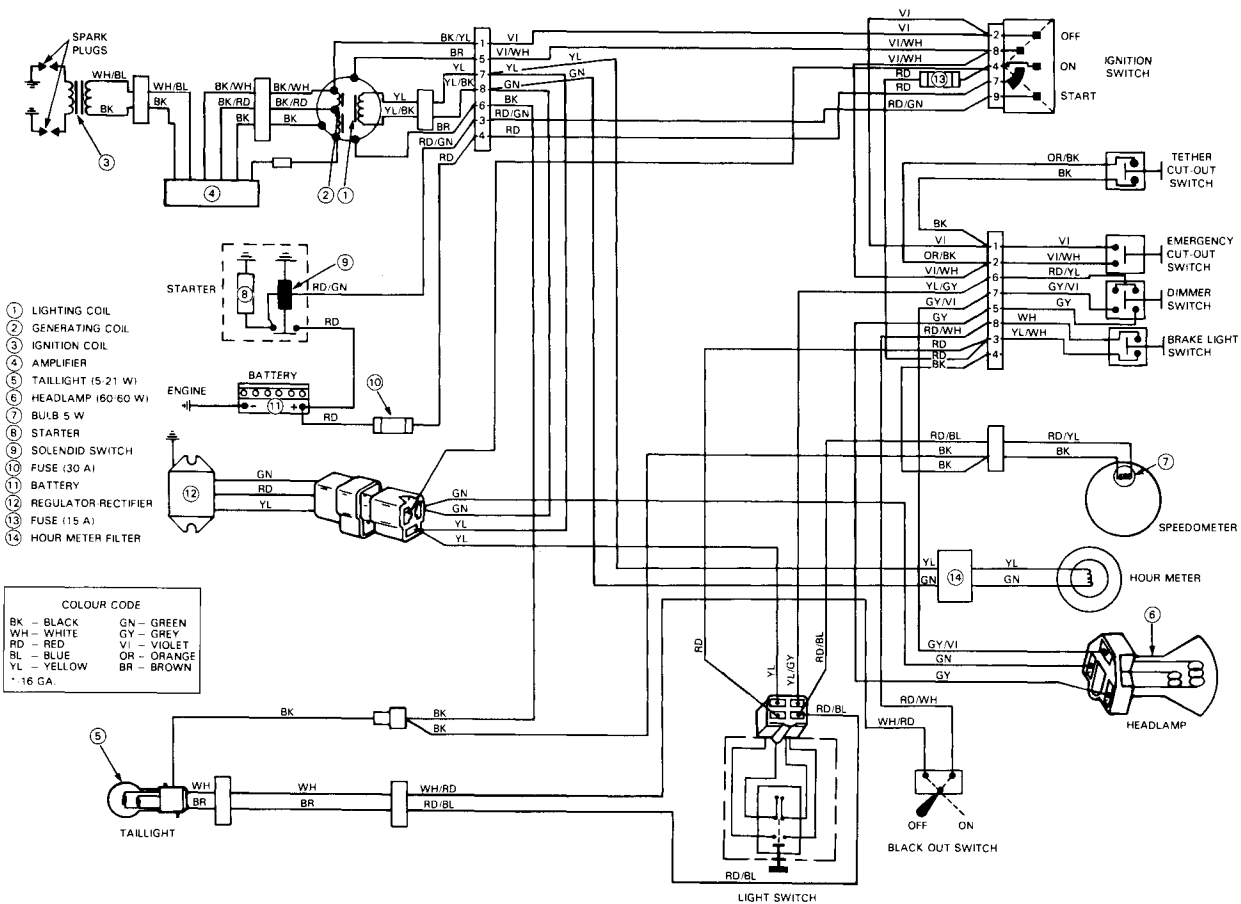
## Standard Tools



A001001016

- A. Screwdriver
  - B. Socket 10/13 mm
  - C. Open end wrench 10/13 mm
  - D. Drive belt
  - E. Socket wrench handle
  - F. Starter rope
  - G. Socket 21/26 mm
  - H. Extension bar
  - I. Socket 11/13 mm
  - J. Spark plug socket extension with retainer pins
  - K. Spark plug (2)
-

# WIRING DIAGRAM ALPINE MILITARY



**WARNING:** Ensure all terminals are properly crimped on the wires and all connector housings are properly fastened.

