



**HIRTH MOTOREN KG**

7141 BENNINGEN/NECKAR · KREIS LUDWIGSBURG · WEST GERMANY

**Spare Parts List**

**EL 23**

**HIRTH Engine**

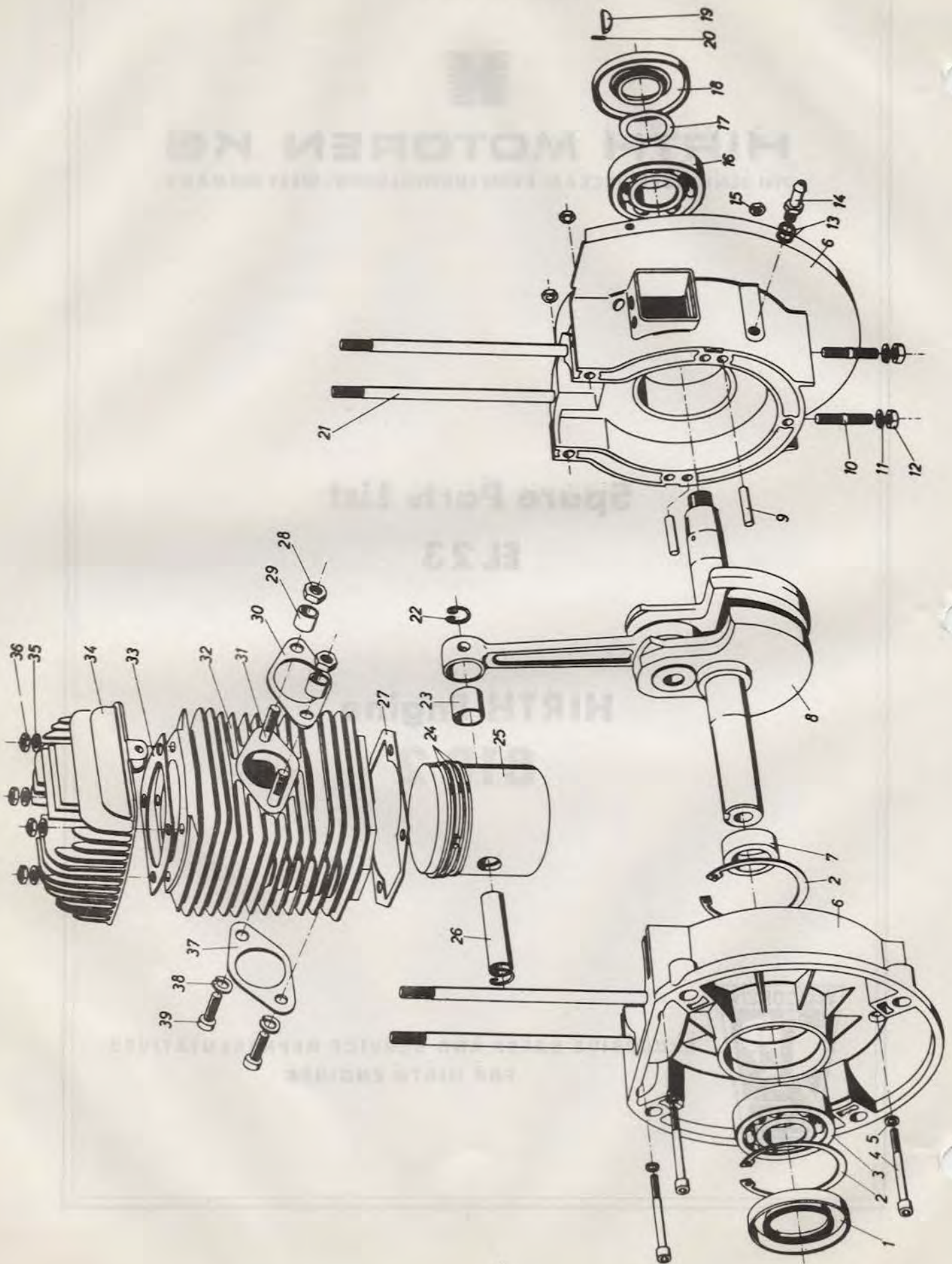
**81R 2**



EXCLUSIVE SALES AND SERVICE REPRESENTATIVES  
FOR HIRTH ENGINES

Figure 11

MAIN ENGINE PARTS  
FOR MODEL 81R2

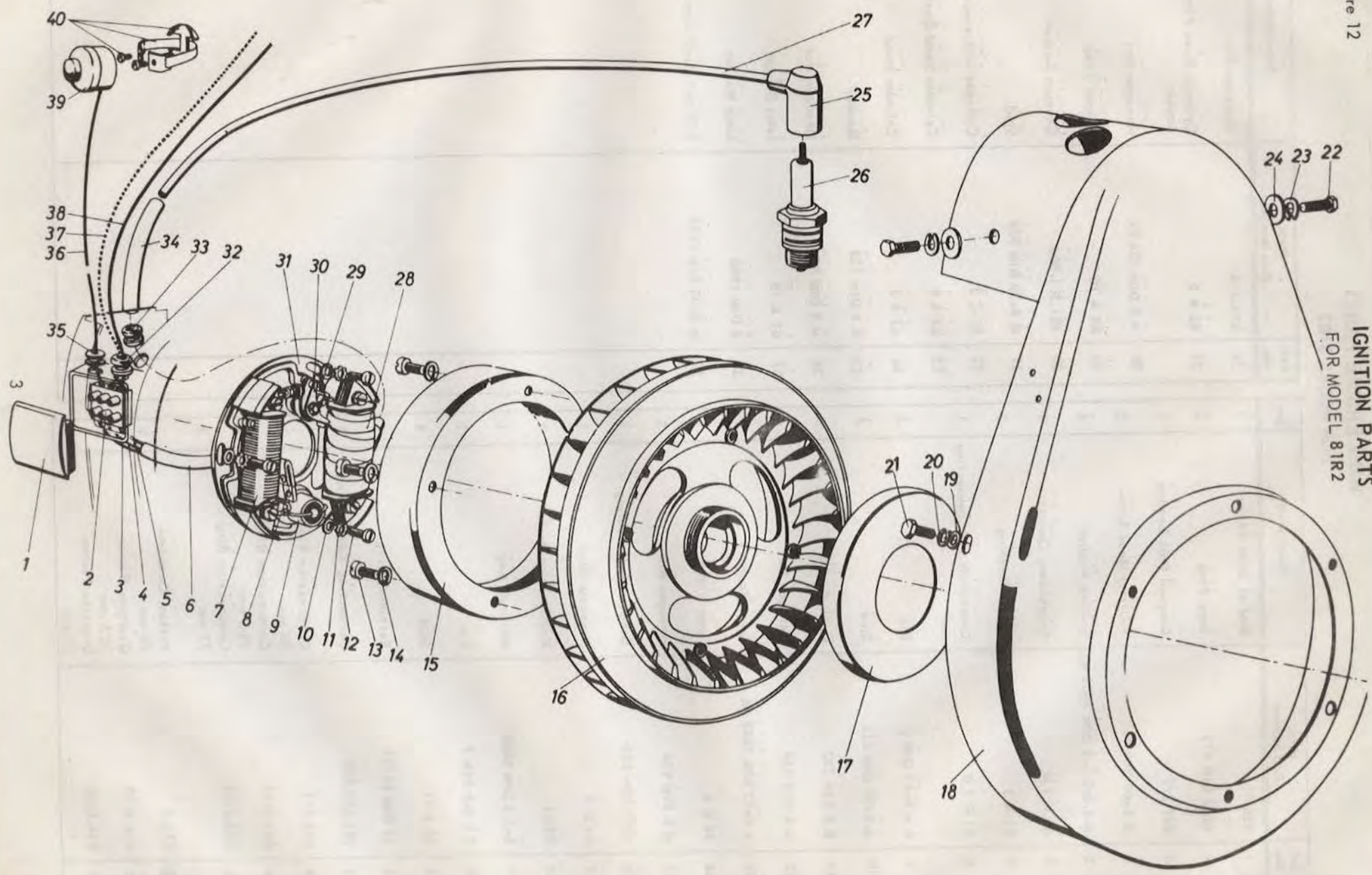


**MAIN ENGINE PARTS  
FOR MODEL 81R2**

Figure 11

Ref. No.	Hirth Part Number	Description	Qty.	Ref. No.	Hirth Part Number	Description	Qty.
1	055.11	Radial Joint Washer	1	26	014.4/4	Gudgeon Pin	1
2	62x2 DIN 472	Snap Ring	2	27	62 A 5	Cylinder Base Flange Gasket	1
3	047.2/7	Grooved Ball Bearing	1	28	M 8 DIN 934 Cu	Hexagon Nut	2
4	M 6x60 DIN 912	Fillister Head Screw	5	29	68 A 10	Spacer Tube	2
5	A 6.5x9.5x2 DIN 7603 AL	Sealing Washer	5	30	451.301-004	Exhaust Gasket	1
6	60 K 1 U	Crankcase, Complete	1	31	M 8x30 DIN 939	Stud	2
7	61 M 3	Spacer Bushing	1	32	82 C 2	Cylinder with studs	1
8	61 R 1 U	Crankshaft with connecting rod	1	33	62 A 6	Cylinder Head Gasket	1
9	6 m 6x12 DIN 7	Pin	2	34	62 A 7	Cylinder Head	1
10	M 8x20 DIN 835	Stud	4	35	8.4 DIN 125	Washer	4
11	B 8 DIN 127	Lock Washer	4	36	M 8 DIN 934	Hexagon Nut	4
12	M 8 DIN 934	Hexagon Nut	4	37	67 A 10	Inlet Gasket	1
13	A 8x12 DIN 7603 AL	Joint Washer	2	38	8 DIN 7980	Lock Washer	2
14	90 B 4	Hose Nipple	1	39	M 8x30 DIN 6912	Fillister Head Screw	2
15	M 6 DIN 934	Hexagon Nut	5				
16	6305 DIN 625	Grooved Ball Bearing	1				
17	61 D 3	Pressure Disc	1				
18	055.1	Radial Joint Washer	1				
19	6x7.5 DIN 6888	Woodruff Key	1				
20	3 h 8x8 DIN 7	Pin	1				
21	30 A 11	Stud	4				
22	18 DIN 73123	Retaining Ring	2				
23	901.200-005	Connecting Rod Bushing	1				
24	014.4/1	Compression Ring 70 mm	3				
24	013.4/11	Compression Ring 70.5 mm	3				
24	014.4/21	Compression Ring 71 mm	3				
25	014.4	Piston, Complete 70 mm	1				
25	014.4/10	Oversize Piston 70.5 mm	1				
25	014.4/20	Oversize Piston 71 mm	1				

Figure 12



IGNITION PARTS  
FOR MODEL 81R2

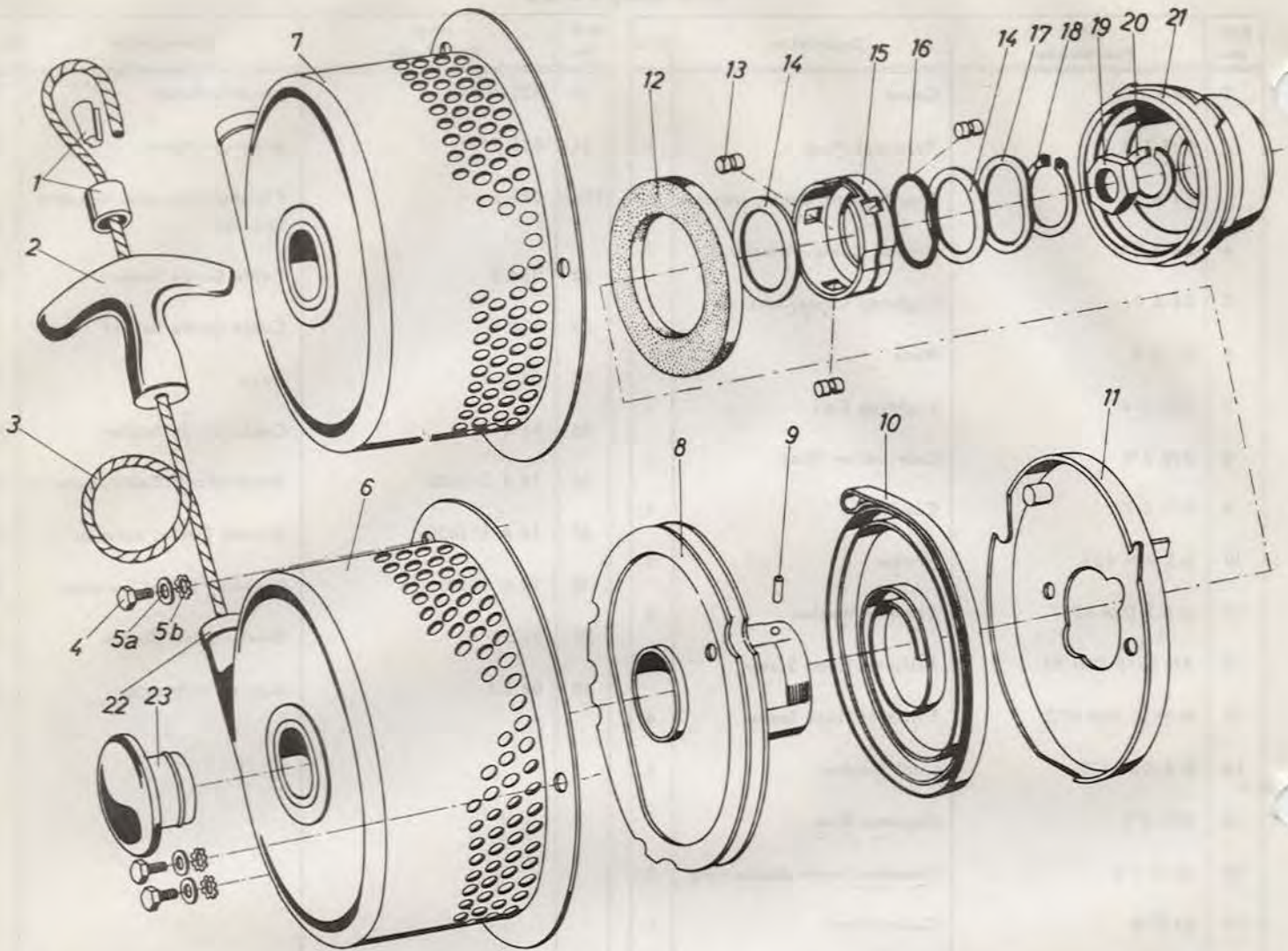
**IGNITION PARTS  
FOR MODEL 81R2**

Figure 12

Ref. No.	Hirth Part Number	Description	Qty.	Ref. No.	Hirth Part Number	Description	Qty.
1	64 A 6	Cover	1	30	021.4/5	Movable Point	1
2	026.1/4	Terminal Plug	1	31	021.5/1	Armature Plate	1
3	64 A 7	Short-circuit Cable, interior	1	15-31	021.5	Flywheel Dynamo Magneto Ignition	1
4	64 A-3 U	Ground Cable, interior	1	32	034.3	Cable Guide Socket	1
5	64 A 1	Lighting Cable, interior	1	33	034.1	Cable Guide Socket	1
6	64 D 2	Hose	1	34	64 D 1	Hose	1
7	021.5/4	Lighting Coil	1	35	94 C 1	Cable Guide Socket	1
8	020.2/8	Lubrication Wick	1	36	14 A 1/1850	Short-circuit Cable, exterior	1
9	021.3/7	Condenser	1	37	14 A 1/1850	Ground Cable, exterior	1
10	5.3 DIN 433	Washer	3	38	14 A 1/1850	Lighting Cable, exterior	1
11	A 5.3 DIN 6797	Toothed Washer	3	39	032.1	Short-circuit Button	1
12	AM 5x15 DIN 84	Fillister Head Screw	3	40	04.9.1	Support with strap	1
13	M 6x15 DIN 912	Fillister Head Screw	4				
14	B 6 DIN 127	Lock Washer	4				
15	020.5/2	Magneto Ring	1				
16	63 E 1 U	Fanwheel with double ring	1				
17	63 E 8	Cover Plate	1				
18	63 N 2 U	Fan Housing	1				
19	6.4 DIN 125	Washer	3				
20	B 6 DIN 127	Lock Washer	3				
21	M 6x18 DIN 933	Hexagon Head Screw	3				
22	AM 6x18 DIN 7513	Hexagon Head Screw	2				
23	B 6 DIN 127	Lock Washer	2				
24	B 6.4 DIN 9021	Washer	2				
25	024.9	Spark Plug Hood	1				
26	023.2	Spark Plug	1				
27	026.5/480	Ignition Cable	1				
28	020.5/3	Ignition Coil	1				
29	021.4/6	Fixed Point	1				

Figure 13

# RECOIL STARTER ASSEMBLY FOR MODEL 81R2



Ref. No.	Hirth Part Number	Description	Qty.
1	75 B 34	Recoil Rope Clamp, only	1
	75 B 35	Recoil Rope Clamp, complete	1
2	75 B 36	Handle	1
3	15 B 14	Wire Rope	1
4	M 5x8 DIN 933	Hexagon Head Screw	3
5a	5.3 DIN 125	Washer	3
5b	A 5.3 DIN 6797	Toothed Washer	3
6	65 A 4 U	Starter Housing, complete	1
7	65 A 3 U	Recoil Starter, complete	1
8	15 B 9 U	Driver Pulley	1
9	3x8 DIN 1473	Oval Head Grooved Pin	1
10	15 B 18	Spiral Spring	1
11	65 A 18 U	Spring Cover, complete	1
12	65 A 17	Foam Rubber Ring	1

Ref. No.	Hirth Part Number	Description	Qty.
13	75 B 16	Clamp Roller	3
14	15 A 17	Washer	2
15	15 B 31	Roller Cage	1
16	75 B 17	Annular Spring	1
17	15 A 19	Lock Washer	1
18	32x1.5 DIN 471	Snap Ring	1
19	M 16x1.5 DIN 936	Hexagon Nut	1
20	B 16 DIN 127	Lock Washer	1
21	65 A 14 U	Recoil Starter Drive Hub	1
22	75 B 23	Rope Guide Bushing	1
23	15 B 20	Plug	1