

# HIRTH MOTOREN KG

7141 BENNINGEN/NECKAR · KREIS LUDWIGSBURG · WEST GERMANY

---

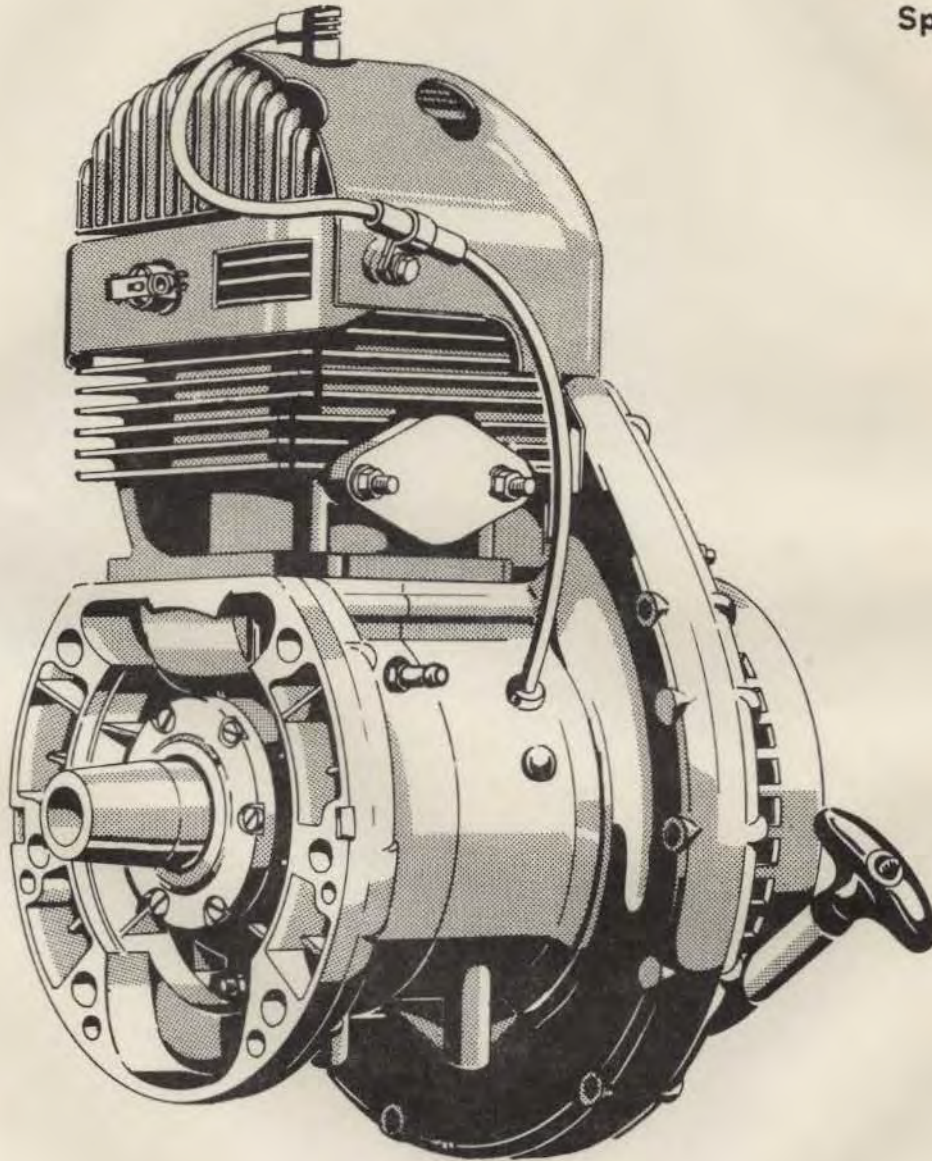


Model **56 R**

**HIRTH Engine**

**Spare Parts List**

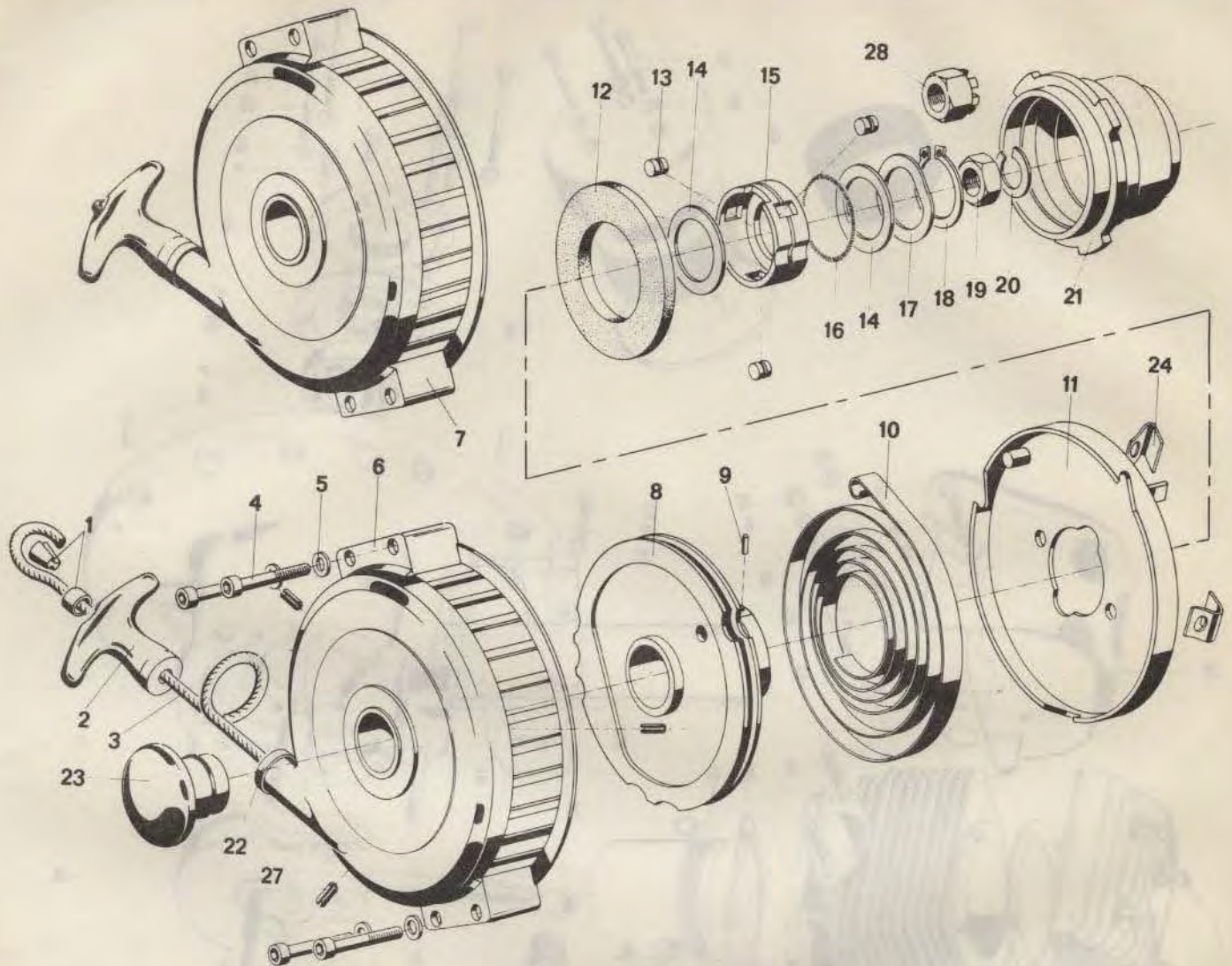
ISSUE MM-316



EXCLUSIVE SALES AND SERVICE REPRESENTATIVES FOR HIRTH ENGINES

Figure 30

## RECOIL STARTER PARTS FOR MODEL 56R

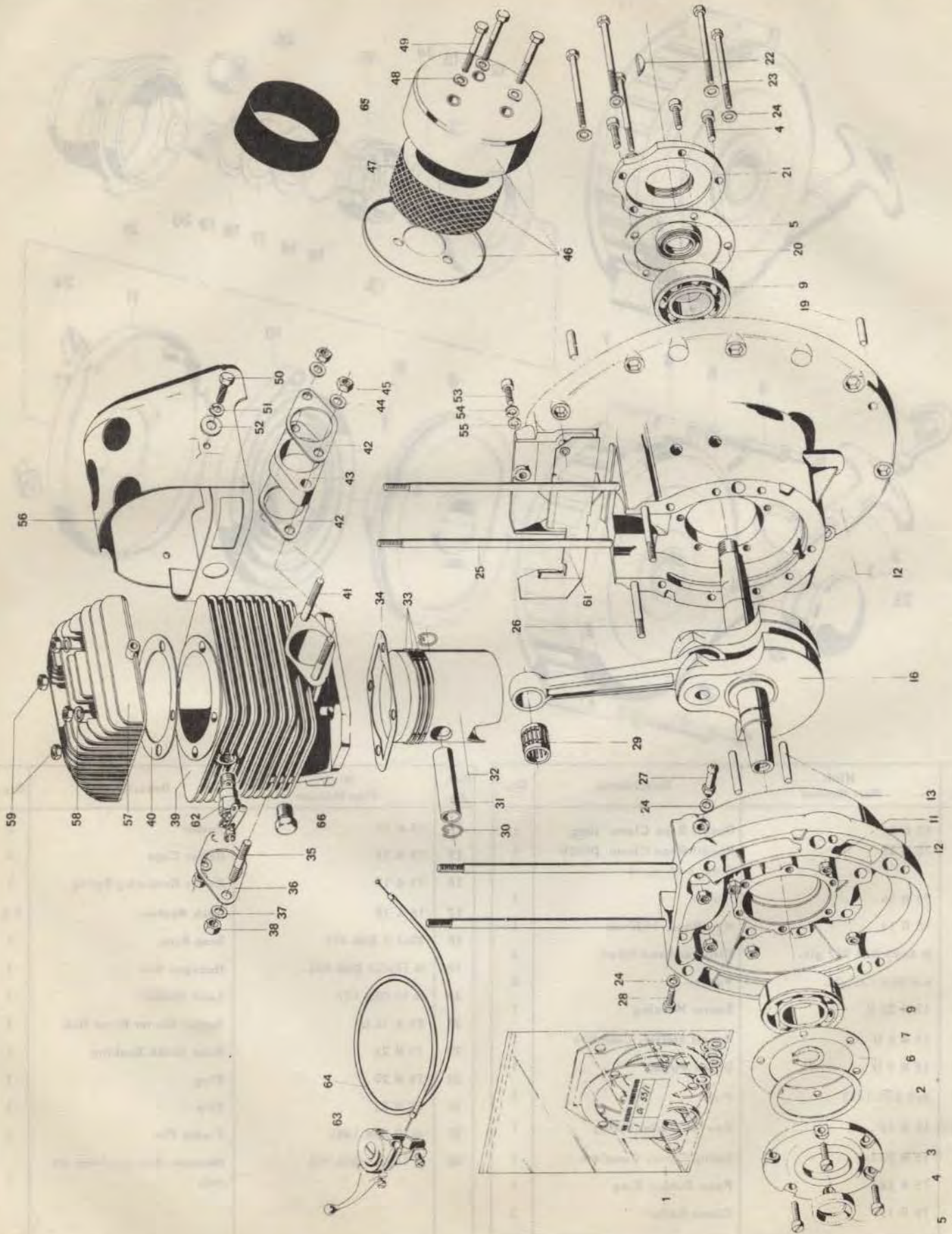


Ref. No.	Hirth Part Number	Description	Qty.
1	75 B 34 75 B 35	Recoil Rope Clamp ring Recoil Rope Clamp piece Order both parts	1 1
2	75 B 36	Handle	1
3	15 B 14	Wire Rope, 1920 mm	1
4	M 6x45 DIN 912 glz.	Fillister Head Screw	4
5	6.4 DIN 125 glz.	Washer	4
6	15 B 22 U	Starter Housing	1
7	15 B 6 U	Recoil Starter, Complete	1
8	15 B 9 U	Driver Pulley	1
9	3x8 DIN 1473	Pin	1
10	15 B 18	Rewind Starter Spring	1
11	15 B 23 U	Spring Cover, Complete	1
12	15 B 24	Foam Rubber Ring	1
13	75 B 16	Clamp Roller	3

Ref. No.	Hirth Part Number	Description	Qty.
14	15 A 17	Washer	2
15	15 B 31	Roller Cage	1
16	75 B 17	Roller Retaining Spring	1
17	15 A 19	Lock Washer	1-2
18	32x1.5 DIN 471	Snap Ring	1
19	M 16x1.5 DIN 936	Hexagon Nut	1
20	B 16 DIN 127	Lock Washer	1
21	65 A 14 U	Recoil Starter Drive Hub	1
22	75 B 23	Rope Guide Bushing	1
23	15 B 20	Plug	1
24	15 B 32	Clip	3
27	4x10 DIN 1481	Fixing Pin	3
28	M 16x1.5 DIN 935	Hexagon Nut, for Snow Jet only	1

Figure 28

# MAIN ENGINE PARTS FOR MODEL 56R

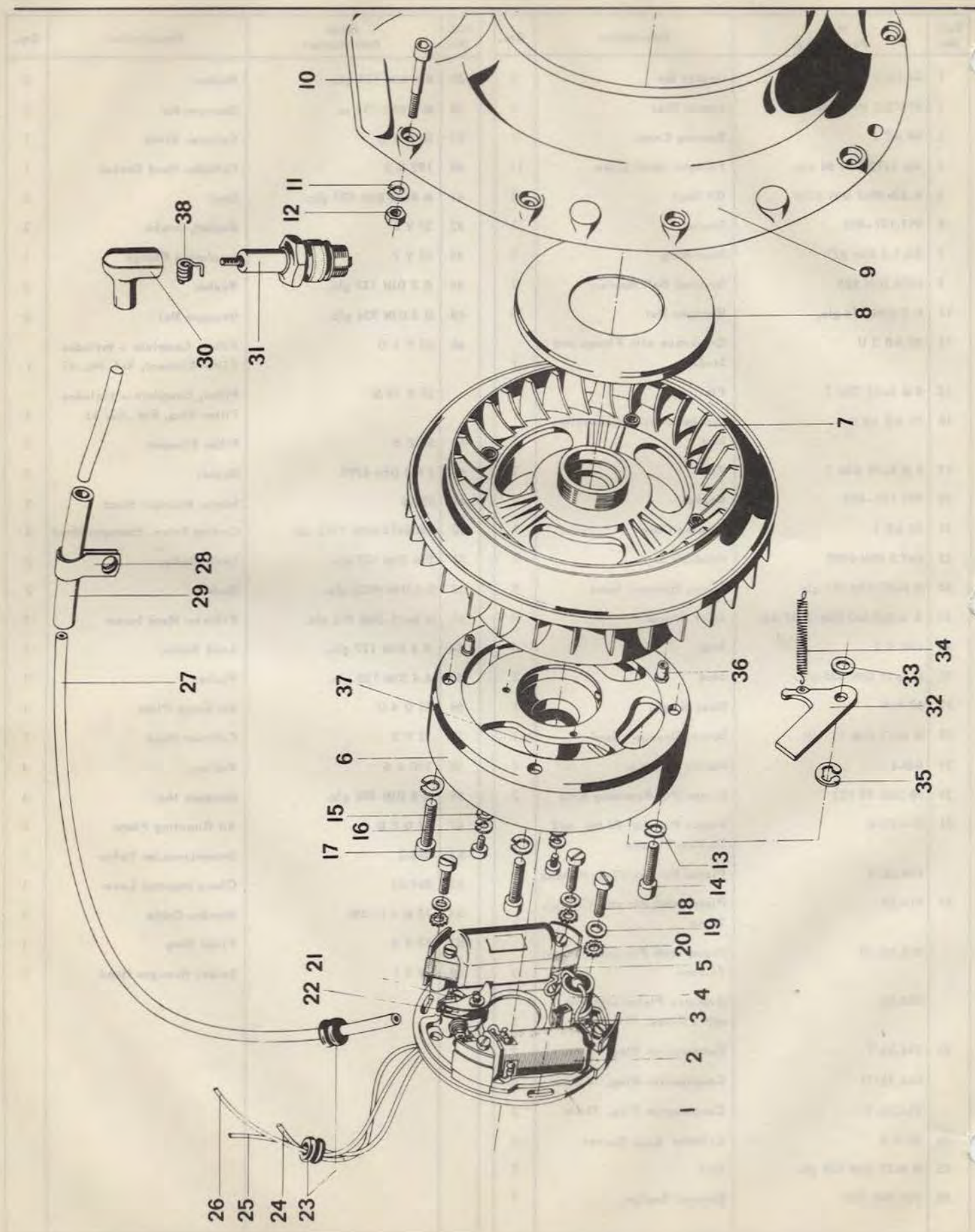


### MAIN ENGINE PARTS FOR MODEL 56R

Ref. No.	Hirth Part Number	Description	Qty.	Ref. No.	Hirth Part Number	Description	Qty.
1	Di 55/1	Gasket Set	1	37	8.4 DIN 125 glz.	Washer	2
2	50x62x1 DIN 988	Spacer Disc	1	38	M 8 DIN 934 cu	Hexagon Nut	2
3	50 AE 2	Bearing Cover	1	39	52 N 3 U	Cylinder Block	1
4	AM 5x12 DIN 84 glz.	Fillister Head Screw	11	40	192 K 2	Cylinder Head Gasket	1
5	A 30x40x7 DIN 3760	Oil Seal	2	41	M 8x33 DIN 939 glz.	Stud	2
6	901.101-006	Gasket	1	42	57 Y 6	Gasket, intake	2
7	30x1.5 DIN 471	Snap Ring	1	43	57 Y 7	Insulating Flange	1
9	6206 DIN 625	Grooved Ball Bearing	2	44	B 8 DIN 137 glz.	Washer	2
11	M 6 DIN 934 glz.	Hexagon Nut	12	45	M 8 DIN 934 glz.	Hexagon Nut	2
12	50 AB 3 U	Crankcase with Flange and Studs	1	46	57 Y 1 U	Filter, Complete - Includes Filter Element, Ref. No. 47	1
13	8 M 6x32 DIN 7	Pin	2		57 Y 10 U	Filter, Complete - Includes Filter Ring, Ref. No. 65	1
16	51 AB 10 U	Crankshaft with Connecting Rod	1	47	57 Y 5	Filter Element	1
19	8 M 6x16 DIN 7	Pin	2	48	J 6.4 DIN 6798	Washer	3
20	901.101-005	Gasket	1	49	051.5	Screw, Hexagon Head	3
21	50 AE 1	Bearing Cover	1	50	AM 6x18 DIN 7513 glz.	Cutting Screw, Hexagon Head	2
22	6x7.5 DIN 6888	Woodruff Key	1	51	B 6 DIN 127 glz.	Lock Washer	2
23	M 6x60 DIN 931 glz.	Screw, Hexagon Head	9	52	6.4 DIN 9021 glz.	Washer	2
24	A 6.5x9.5x2 DIN 7603 AL	Joint Washer	11	53	M 6x15 DIN 912 glz.	Fillister Head Screw	1
25	190 B 5	Stud	4	54	B 6 DIN 127 glz.	Lock Washer	1
26	M 6x55 DIN 835 glz.	Stud	2	55	6.4 DIN 125 glz.	Washer	1
27	50 K 4	Hose Nipple	1	56	53 Q 4 U	Air Guide Plate	1
28	M 6x10 DIN 933 glz.	Screw, Hexagon Head	1	57	52 F 5	Cylinder Head	1
29	046.6	Needle Bearing	1	58	190 A 6	Washer	4
30	18 DIN 73 123	Piston Pin Retaining Ring	2	59	M 8 DIN 934 glz.	Hexagon Nut	4
31	014.35/4	Piston Pin, for 74 mm and 74.5 mm Pistons	1	61	53 Q 6 U	Air Directing Plate	1
	014.26/4	Piston Pin, for 75 mm Pistons	1	62	058.2	Decompression Valve	1
32	014.35	Piston with Pin and 2 Rings, 74 mm	1	63	049.11	Clamp Mounted Lever	1
	014.35/10	Piston with Pin and 2 Rings, 74.5 mm	1	64	17 M 1 U/450	Bowden Cable	1
	014.32	Oversize Piston with Pin and 2 Rings, 75 mm	1	65	57 Y 9	Filter Ring	1
33	014.35/1	Compression Ring, 74 mm	2	66	19 S 1	Screw, Hexagon Head	1
	014.35/11	Compression Ring, 74.5 mm	2				
	014.26/1	Compression Ring, 75 mm	2				
34	50 A 5	Cylinder Base Gasket	1				
35	M 8x20 DIN 939 glz.	Stud	2				
36	901.300-008	Exhaust Gasket	1				

Figure 29

### IGNITION PARTS FOR MODEL 56R



## IGNITION PARTS FOR MODEL 56R

Ref. No.	Hirth Part Number	Description	Qty.
1 - 6	021.14	DYNAMO MAGNETO IGNITION, WITH ADVANCE TIMING	1
1	021.14/1	Armature Plate	1
2	021.5/4	Lighting Coil	1
3	020.4/8	Lubrication Wick	1
4	021.3/7	Condenser	1
5	021.14/3	Ignition Coil	1
6	021.14/2	Magneto Ring, Complete	1
7	53 Q 2 U	Flywheel, Complete	1
8	63 E 8	Cover Plate	1
9	53 E 3	Fan Housing	1
10	M 6x35 DIN 912 glz.	Fillister Head Screw	8
11	6 DIN 7980 glz.	Lock Washer	8
12	M 6 DIN 934 glz.	Hexagon Nut	8
13	B 6 DIN 127 glz.	Lock Washer	4
14	M 6x20 DIN 912 glz.	Fillister Head Screw	4
15	4.3 DIN 125 glz.	Washer	3
16	B 4 DIN 127 glz.	Lock Washer	3
17	M 4x5 DIN 84 glz.	Fillister Head Screw	3
18	AM 5x15 DIN 84 glz.	Fillister Head Screw	3
19	5.3 DIN 433 glz.	Washer	3
20	A 5.1 DIN 6797 glz.	Toothed Washer	3
21	021.14/6	Fixed Point	1
22	021.14/5	Movable Point	1
23	14 C 2	Rubber Bushing	2
24	021.5/13	Ground Cable	1
25	021.4/11	Lighting Cable	1
26	020.4/12	Short Circuit Cable	1
27	026.5/550	Ignition Cable	1
28	34 B 4	Clamp for Ignition	1
29	A 8x12 DIN 73379/50	Hose	1
30	024.11	Spark Plug Hood	1
31	023.12	Spark Plug	1
32	020.12/19	Timing Lever	1
33	020.12/20	Washer	2
34	020.12/18	Spring	1
35	5 DIN 6799	Horse Shoe Lock	1
36	034.12	Plug	2
37	021.14/9	Advancing Cam	1
38	024.12	Spring	1