



HIRTH MOTOREN KG

7141 BENNINGEN/NECKAR · KREIS LUDWIGSBURG · WEST GERMANY

Spare Parts List

EL 27

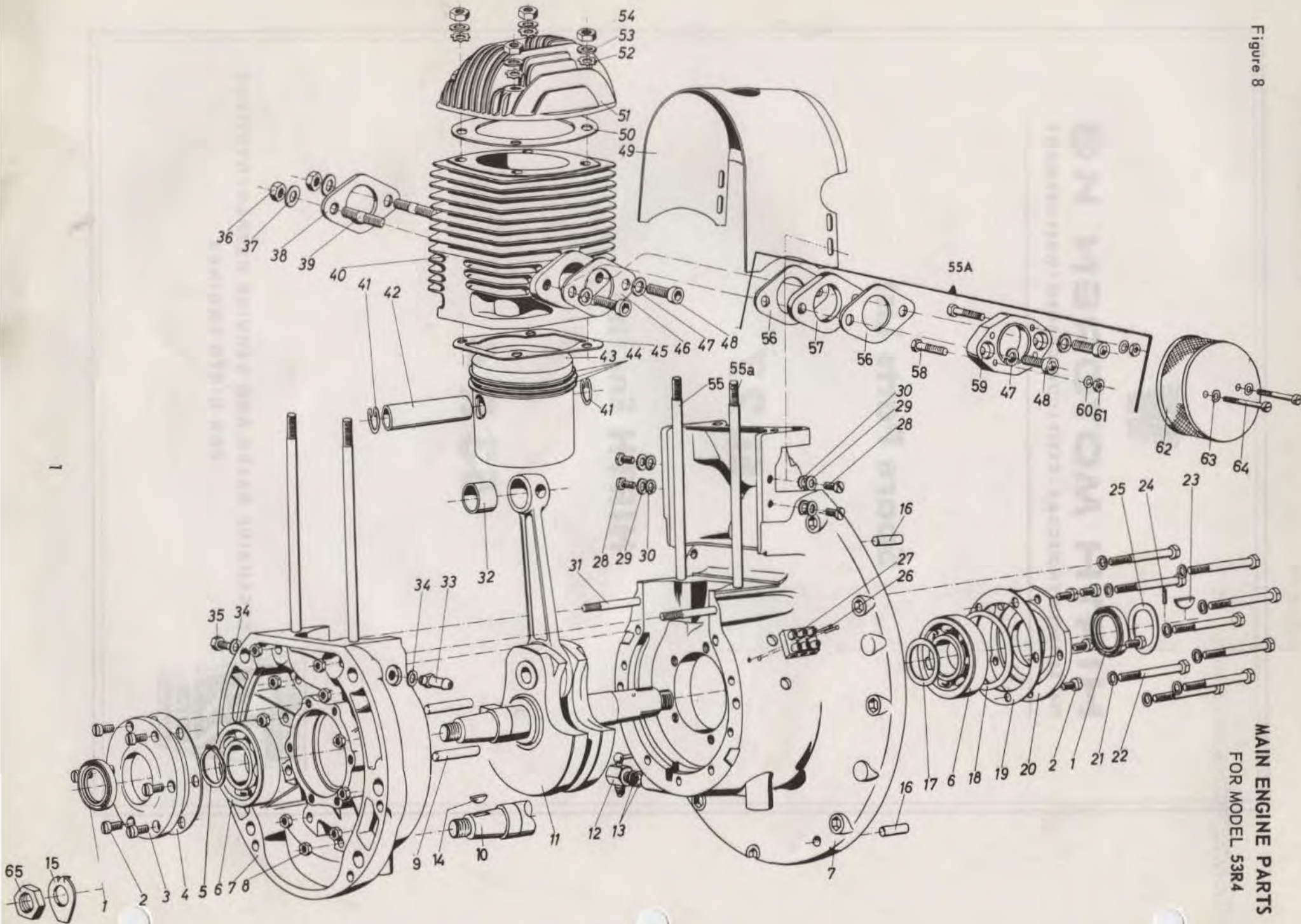
HIRTH Engine

53 R 4



EXCLUSIVE SALES AND SERVICE REPRESENTATIVES
FOR HIRTH ENGINES

Figure 8



MAIN ENGINE PARTS
FOR MODEL 53R4

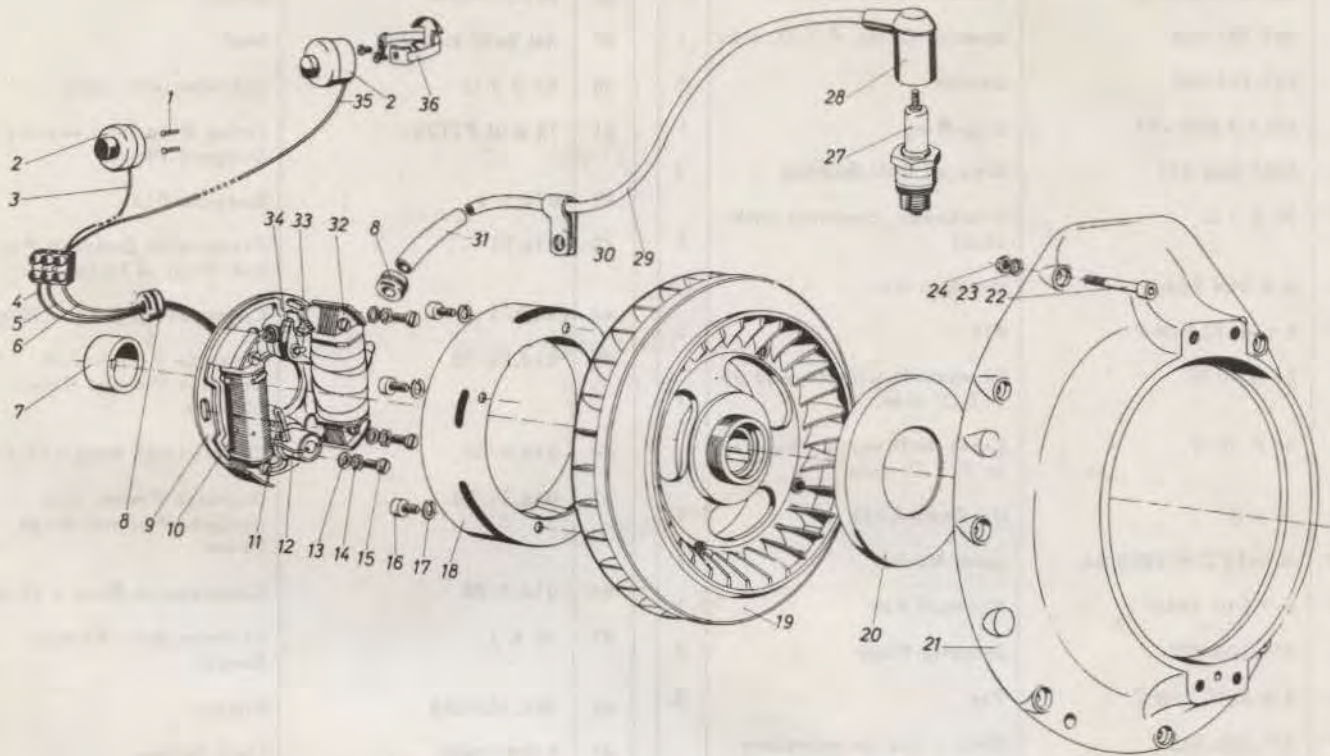
MAIN ENGINE PARTS
FOR MODEL 53R4

Figure 8

Ref. No.	Hirth Part Number	Description	Qty.	Ref. No.	Hirth Part Number	Description	Qty.
1	055.19	Oil Seal	2	37	8.4 DIN 125	Washer	2
2	AM 5x12 DIN 84	Fillister Head Screw	11	38	901.300-008	Gasket	1
3	901.101-008	Bearing Cover, P.T.O. side	1	39	AM 8x20 DIN 939	Stud	2
4	901.101-006	Gasket	1	40	52 D 1 U	Cylinder with studs	1
5	25x1.2 DIN 471	Snap Ring	1	41	18 DIN 73123	Spring Ring for Locating Gudgeon Pin	2
6	6305 DIN 625	Grooved Ball Bearing	2	42	014.9/4	Gudgeon Pin	1
7	50 X 1 U	Crankcase, complete with studs	1	43	014.21	Piston with Gudgeon Pin and Rings - 75 mm	1
8	M 6 DIN 934	Hexagon Nut	11	44	014.9/1	Compression Ring - 75 mm	3
9	8 m 6x32 DIN 7	Pin	2	43	014.21/10	Oversize Piston with Gudgeon Pin and Rings 75.5 mm	1
10	51 N 10 U	Crankshaft with keyway on P.T.O. side	1	44	014.9/10	Compression Ring - 75.5 mm	3
11	51 P 10 U	Crankshaft without keyway on P.T.O. side	1	43	014.21/20	Oversize Piston with Gudgeon Pin and Rings 76 mm	1
12	30 J 8	Oil Drain Cock	1	44	014.9/20	Compression Ring - 76 mm	3
13	A 8x12 DIN 7603 AL	Joint Washer	2	45	50 A 5	Cylinder Base Flange Gasket	1
14	6x9 DIN 6888	Woodruff Key	1	46	901.300-004	Gasket	1
15	451.200-007	Security Plate	1	47	8 DIN 7980	Lock Washer	2
16	8 m 6x16 DIN 7	Pin	2	48	M 8x18 DIN 6912	Fillister Head Screw	2
17	251.208-006	Shim - use as necessary		49	53 J 1 U	Air Guide Plate	1
18	901.200-006	Shim - use as necessary		50	901.300-700	Gasket	1
19	901.101-005	Gasket	1	51	52 E 1	Cylinder Head	1
20	901.101-007	Bearing Cover, ignition side	1	52	A 8.4 DIN 6797	Toothed Washer	4
21	A 6.5x9.5x2 DIN 7603 AL	Joint Washer	9	53	8.4 DIN 125	Washer	4
22	M 6x60 DIN 931	Hexagon Head Screw	9	54	M 8 DIN 934	Hexagon Nut	4
23	6x7.5 DIN 6888	Woodruff Key	1	55	50 A 6	Stud	4
24	3 h 8x8 DIN 7	Pin	1	55A	67 A 18 U	Intermediate Flange, complete	1
25	61 D 3	Pressure Disc	1	47	8 DIN 7980	Consisting of: Lock Washer	2
26	3x18 DIN 1476	Oval Head Grooved Pin	2	48	M 8x30 DIN 6912	Fillister Head Screw	2
27	026.1/3	Terminal Plug	1	56	67 A 10	Gasket	2
28	AM 5x12 DIN 84	Fillister Head Screw	4	57	068.2	Insulating Piece	1
29	5.3 DIN 125	Washer	4	58	M 6x25 DIN 931	Hexagon Head Screw	2
30	B 5 DIN 127	Lock Washer	4	59	67 A 17	Intermediate Flange	1
31	M 6x55 DIN 835	Stud	2	60	6.4 DIN 433	Washer	2
32	901.200-005	Connecting Rod Bushing	1	61	M 6 DIN 934	Hexagon Nut	2
33	50 K 4	Hose Nipple	1	62	67 A 19 U	Filter complete	1
34	A 6.5x9.5x2 DIN 7603 AL	Joint Washer	1-2	63	B 5 DIN 137	Washer	2
35	M 6x10 DIN 933	Hexagon Head Screw	1	64	051.2	Fillister Head Screw	2
36	M 8 DIN 934 cu	Hexagon Nut	2	65	M 16x1.5 DIN 936	Hexagon Nut	1

Figure 9

IGNITION PARTS
FOR MODEL 53R4

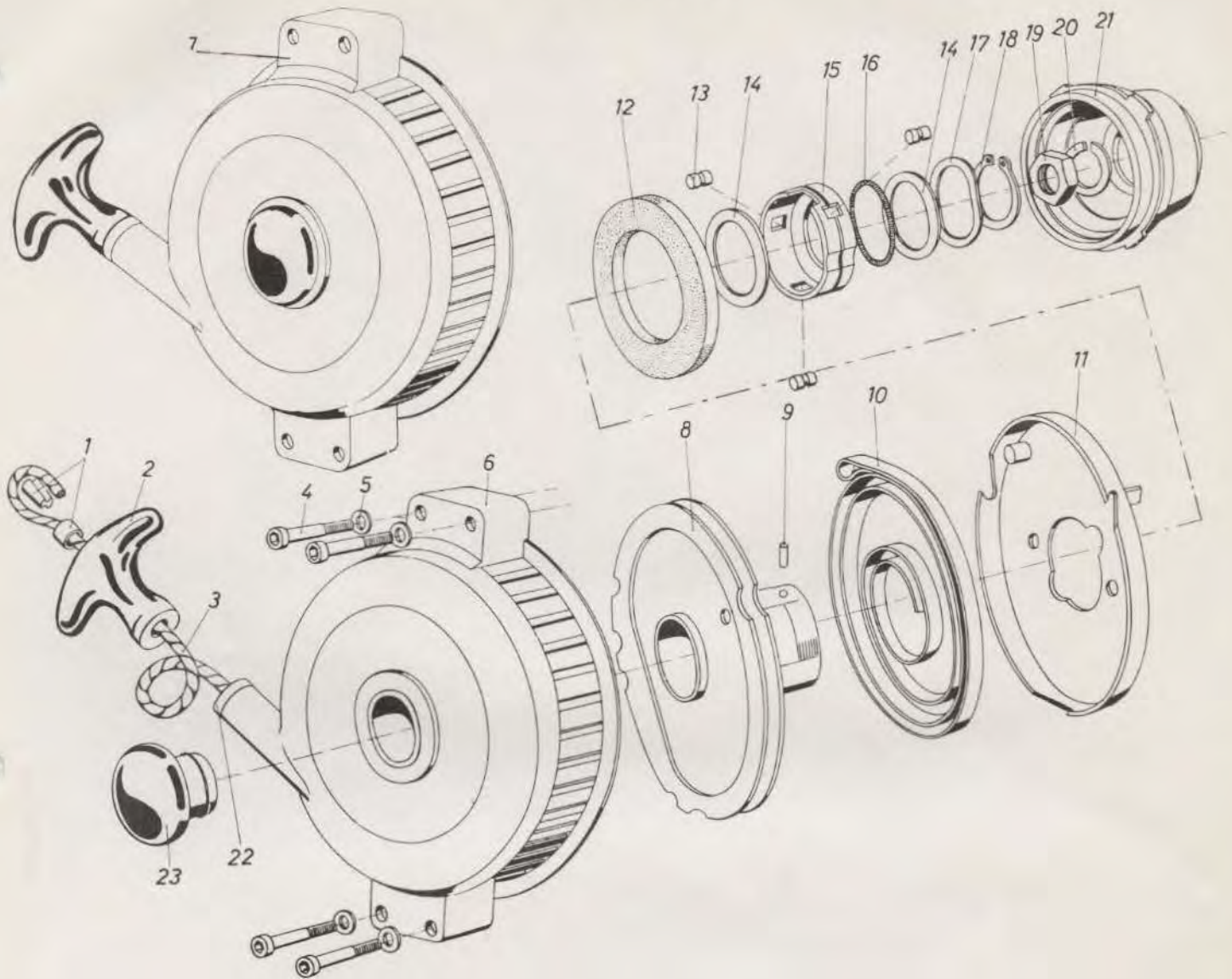


Ref. No.	Hirth Part Number	Description	Qty.
1	3x8 DIN 1476	Oval Head Grooved Pin	2
2	032.1	Short-circuit Button	1
3	14 A 1/180	Short-circuit Cable	1
4	64 A 1	Lighting Cable	1
5	64 A 3 U	Ground Cable	1
6	020.4/12	Short-circuit Cable, interior	1
7	020.5/9	Cam	1
8	034.3	Cable Guide Socket	2
9	021.5/1	Armature Plate	1
10	021.5/4	Lighting Coil	1
11	020.2/8	Lubrication Wick	1
12	021.3/7	Condenser	1
13	5.3 DIN 433	Washer	3
14	A 5.1 DIN 6797 glz.	Toothed Washer	3
15	AM 5x15 DIN 84	Fillister Head Screw	3
16	M 6x15 DIN 912	Fillister Head Screw	4
17	B 6 DIN 127	Lock Washer	4
18	020.5/2	Magneto Ring	1

Ref. No.	Hirth Part Number	Description	Qty.
9-18	021.5	Flywheel Dynamo - Magneto Ignition	1
19	63 E 1 U	Fanwheel	1
20	63 E 8	Cover Plate	1
21	53 E 3	Fan Housing	1
22	M 6x35 DIN 912	Fillister Head Screw	8
23	6 DIN 7980	Lock Washer	8
24	M 6 DIN 934	Hexagon Nut	8
27	023.2	Spark Plug	1
28	024.9	Spark Plug Hood	1
29	026.5/550	Ignition Cable	1
30	34 B 4	Clamp for Ignition Cable	1
31	A 8x12 DIN 73379/50	Hose	1
32	020.5/3	Ignition Coil	1
33	021.4/6	Fixed Point	1
34	021.4/5	Movable Point	1
35	14 A 1/1850	Short-circuit Cable	1
36	049.1	Support with strap	1

RECOIL STARTER ASSEMBLY FOR MODEL 53R4

Figure 10



Ref. No.	Hirth Part Number	Description	Qty.
1	75 B 34 75 B 35	Recoil Rope Clamp – only Recoil Rope Clamp – complete	1 1
2	75 B 36	Handle	1
3	15 B 14	Wire Rope	1
4	M 6x45 DIN 912	Fillister Head Screw	4
5	6.4 DIN 125	Washer	4
6	15 B 22 U	Starter Housing	1
7	15 B 6 U	Recoil Starter, complete	1
8	15 B 9 U	Driver Pulley	1
9	3x8 DIN 1473	Pin	1
10	15 B 18	Spiral Spring	1
11	15 B 23 U	Spring Cover, complete	1

Ref. No.	Hirth Part Number	Description	Qty.
12	15 B 24	Foam Rubber Ring	1
13	75 B 16	Clamp Roller	3
14	15 A 17	Washer	2
15	15 B 31	Roller Cage	1
16	75 B 17	Annular Spring	1
17	15 A 19	Lock Washer	1-2
18	32x1.5 DIN 471	Snap Ring	1
19	M 16x1.5 DIN 936	Hexagon Nut	1
20	B 16 DIN 127	Lock Washer	1
21	65 A 14 U	Recoil Starter Drive Hub	1
22	75 B 23	Rope Guide Bushing	1
23	15 B 20	Plug	1